



CORN

# 5338VT3

Relative Maturity: 103.00



## Characteristics

Cob Color	RED	Ear Girth	M-G	Ear Height	M
Flower Date	E	GDU to Maturity	2500	Kernel Rows	16-18
Leaf Habit	S-U	Plant Height	M	Synchronized Nutrition Rating	M

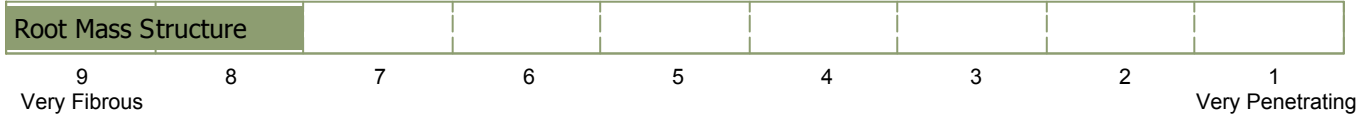
## R 7™ PLACEMENT STRATEGY R7

### The Right Genetics

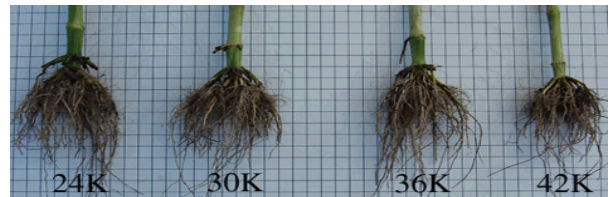
Genetic Type: HY. x N.w.



### The Right Soil Type



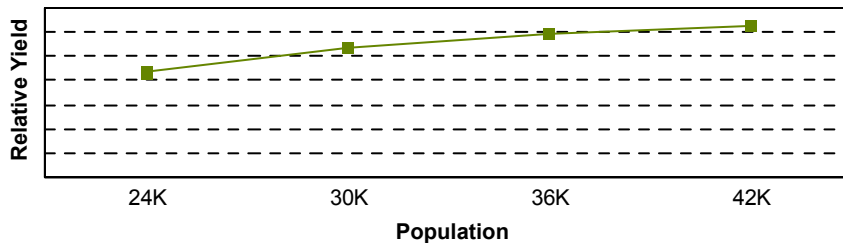
"Well drained, medium textured soils for the best performance"



### The Right Plant Population

Response to Population = 15

"Ear size, root mass and yield goes down when population gets too high"



The data presented herein represents the most current information available, but results may vary due to environmental conditions.

© 2008 Winfield Solutions, LLC. All rights reserved. CROPLAN GENETICS is a registered trademark of Land O'Lakes, Inc.



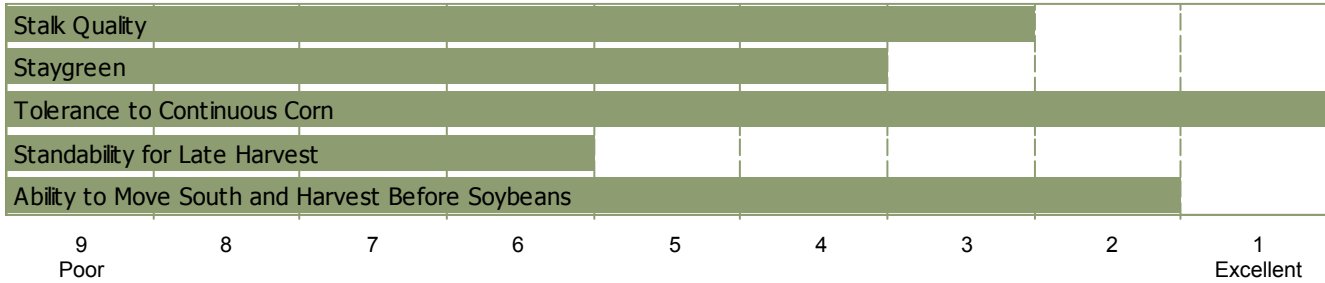
CORN

# 5338VT3

Relative Maturity: 103.00



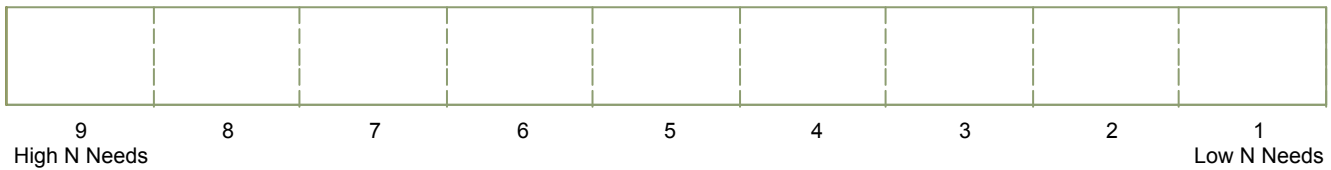
## The Right Cropping System



## The Right Traits

Technology Traits: YGRW/RR2/YGCB  
Refuge Requirements:

## The Right Plant Nutrition



## The Right Crop Protection



The data presented herein represents the most current information available, but results may vary due to environmental conditions.

© 2008 Winfield Solutions, LLC. All rights reserved. CROPLAN GENETICS is a registered trademark of Land O'Lakes, Inc.



CORN

# 5338VT3

Relative Maturity: **103.00**



### Technology Traits:

GENSS = Genuity™ SmartStax™  
 GENVT3P = Genuity™ VT Triple PRO™  
 RR2 = Roundup Ready®  
 YGCB = YieldGard® Corn Borer  
 YGRW = YieldGard® Rootworm  
 CB = Agrisure® Corn Borer  
 RW = Agrisure® Rootworm  
 GT = Agrisure® Glyphosate Tolerant  
 HXT = HERCULEX® XTRA  
 HX = HERCULEX®  
 LL = LibertyLink® System  
 NDS = NutriDense® Silage

### Plant Height:

T = Tall, M = Medium, S = Short

### Ear Height:

H = High, M = Medium, L = Low

### Staygreen:

Late-season health coming from strong leaf-disease resistance, enhancing hybrid standability

### Insect Resistance Management:

Insect-protected crops are genetically improved to provide in-plant protection against selected insect pests. Beneficial insects are not affected. To preserve the benefits and insect protection of these technology crops, Monsanto Technology LLC, Syngenta Crop Protection and Dow AgroSciences have developed insect resistance management (IRM) guidelines that must be incorporated by everyone purchasing and planting insect-protected crops.

### Genetic Type:

N = Northern  
 S = Southern  
 E = Eastern  
 E2 = Eastern 2  
 W = Western  
 EH = Early Health  
 LH = Late Health  
 HY = High Yield  
 F = Flint  
 T = Tropical  
 UR = Unrelated

### Ear Flex:

Ability of hybrid to increase ear size with decreasing population. Flexible-ear type hybrids are made more tolerant to continuous corn by dropping plant population.

### Flower Date:

L = Late, M = Medium, E = Early

### Leaf Habit:

S-U = Semi-Upright, E = Erect



Before opening a bag of seed, be sure to read and understand the stewardship requirements, **including applicable refuge requirements for insect resistance management**, for the biotechnology traits expressed in the seed as set forth in the Monsanto Technology Agreement that you sign. By opening and using a bag of seed, you are reaffirming your obligation to comply with those stewardship requirements.

*These ratings reflect trends observed in research trials that change with variations in rainfall, temperature, crop production patterns and other factors. Ratings on new hybrids are based on limited data and may change as more data is collected.*