



CORN

3214VT3

Relative Maturity: 91.00



Description

- > Uses the same high-yielding female as 3114 and 3514, combined with a new large, girthy-eared Northern male
- > This female adds considerably more plant health, stalk quality and ear consistency than the 314 and 364 female
- > Excellent stalks, roots, test weight and staygreen
- > Large, semi-flex, girthy ear with 18 to 20 rows, therefore populations will need to be medium-high to high

Characteristics

Cob Color	RED	Ear Girth	G	Ear Height	M-H
Flower Date	M	GDU to Maturity	2350	Kernel Rows	18-20
Leaf Habit	S-U	Plant Height	M-T		

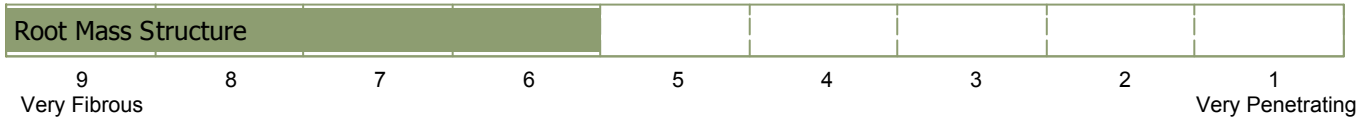
R 7™ PLACEMENT STRATEGY R7

The Right Genetics

Genetic Type: HY.eh. x N.



The Right Soil Type



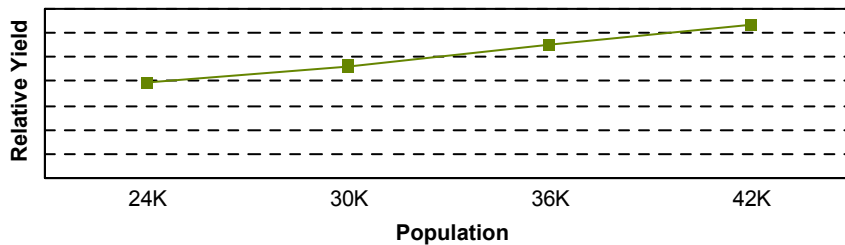
"Will tolerate lighter soils, but responds to H20"



The Right Plant Population

Response to Population = 10

Moderate ear flex and density tolerance allows a wide range of populations



The data presented herein represents the most current information available, but results may vary due to environmental conditions.

© 2008 Winfield Solutions, LLC. All rights reserved. CROPLAN GENETICS is a registered trademark of Land O'Lakes, Inc.



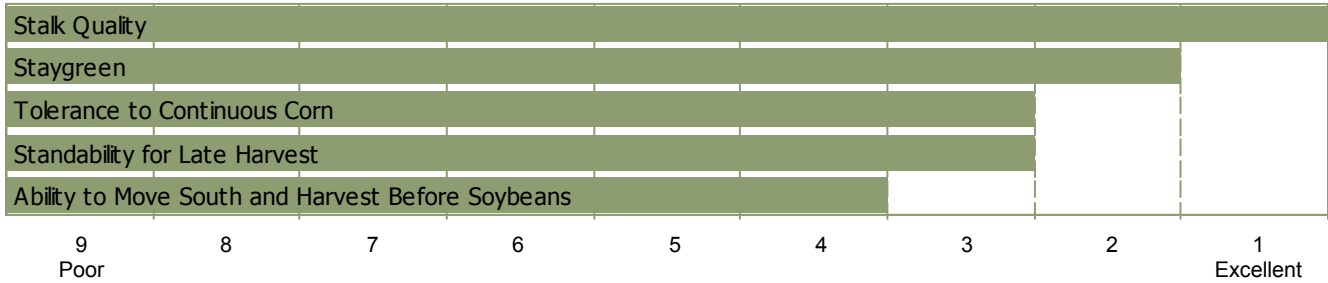
CORN

3214VT3

Relative Maturity: **91.00**



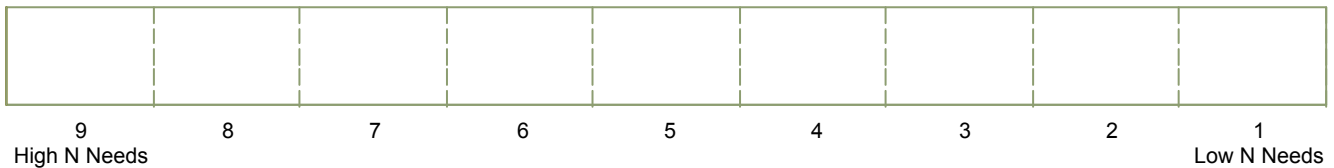
The Right Cropping System



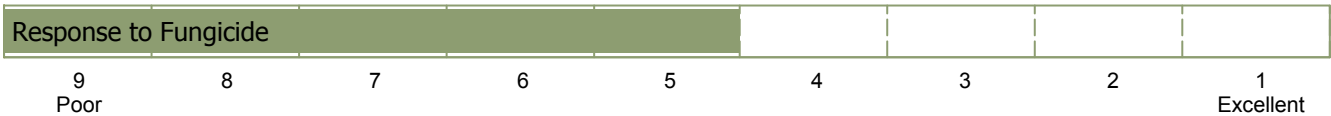
The Right Traits

Technology Traits: YGRW/RR2/YGCB
Refuge Requirements:

The Right Plant Nutrition



The Right Crop Protection



The data presented herein represents the most current information available, but results may vary due to environmental conditions.

© 2008 Winfield Solutions, LLC. All rights reserved. CROPLAN GENETICS is a registered trademark of Land O'Lakes, Inc.



3214VT3

Relative Maturity: **91.00**



Technology Traits:

- GENSS = Genuity™ SmartStax™
- GENVT3P = Genuity™ VT Triple PRO™
- RR2 = Roundup Ready®
- YGCB = YieldGard® Corn Borer
- YGRW = YieldGard® Rootworm
- CB = Agrisure® Corn Borer
- RW = Agrisure® Rootworm
- GT = Agrisure® Glyphosate Tolerant
- HXT = HERCULEX® XTRA
- HX = HERCULEX®
- LL = LibertyLink® System
- NDS = NutriDense® Silage

Plant Height:

T = Tall, M = Medium, S = Short

Ear Height:

H = High, M = Medium, L = Low

Staygreen:

Late-season health coming from strong leaf-disease resistance, enhancing hybrid standability

Insect Resistance Management:

Insect-protected crops are genetically improved to provide in-plant protection against selected insect pests. Beneficial insects are not affected. To preserve the benefits and insect protection of these technology crops, Monsanto Technology LLC, Syngenta Crop Protection and Dow AgroSciences have developed insect resistance management (IRM) guidelines that must be incorporated by everyone purchasing and planting insect-protected crops.

Genetic Type:

- N = Northern
- S = Southern
- E = Eastern
- E2 = Eastern 2
- W = Western
- EH = Early Health
- LH = Late Health
- HY = High Yield
- F = Flint
- T = Tropical
- UR = Unrelated

Ear Flex:

Ability of hybrid to increase ear size with decreasing population. Flexible-ear type hybrids are made more tolerant to continuous corn by dropping plant population.

Flower Date:

L = Late, M = Medium, E = Early

Leaf Habit:

S-U = Semi-Upright, E = Erect



Before opening a bag of seed, be sure to read and understand the stewardship requirements, **including applicable refuge requirements for insect resistance management**, for the biotechnology traits expressed in the seed as set forth in the Monsanto Technology Agreement that you sign. By opening and using a bag of seed, you are reaffirming your obligation to comply with those stewardship requirements.

These ratings reflect trends observed in research trials that change with variations in rainfall, temperature, crop production patterns and other factors. Ratings on new hybrids are based on limited data and may change as more data is collected.