

# 3114VT3

Relative Maturity: **91.00**



## Description

- > Large, girthy, consistent ears produce high top-end yield potential
- > Exceptional stalks and roots with staygreen that is better than our other current hybrids at this maturity
- > Emergence is only average, therefore 3114 is not a plant-me-first type of hybrid
- > 3114 excels on the best soils with plenty of moisture

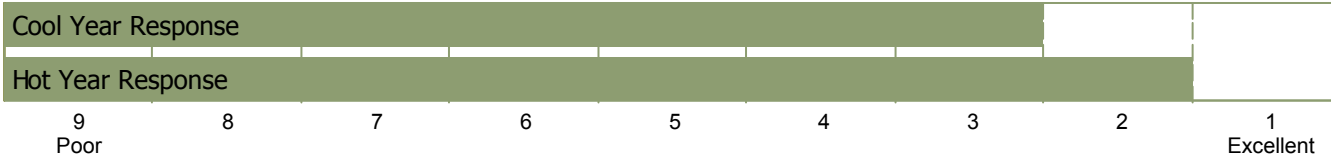
## Characteristics

Cob Color	RED	Ear Girth	M-G	Ear Height	M
Flower Date	M	GDU to Maturity	2320	Kernel Rows	16-18
Leaf Habit	S-U	Plant Height	M-T	Synchronized Nutrition Rating	M

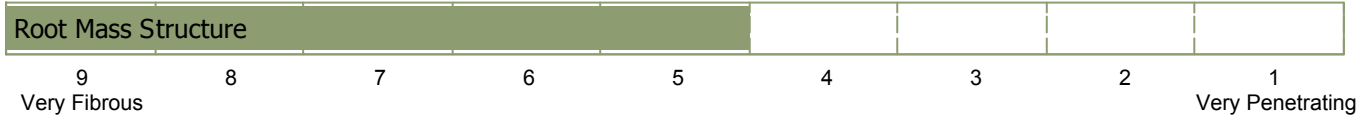
## R 7™ PLACEMENT STRATEGY R7

## The Right Genetics

Genetic Type: HY.eh. x N.



## The Right Soil Type



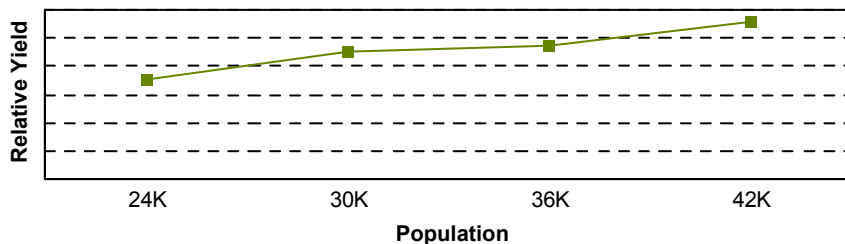
Best on good water holding capacity soils



## The Right Plant Population

Response to Population = 15

Excellent population density tolerance with a determined ear



The data presented herein represents the most current information available, but results may vary due to environmental conditions.

© 2008 Winfield Solutions, LLC. All rights reserved. CROPLAN GENETICS is a registered trademark of Land O'Lakes, Inc.



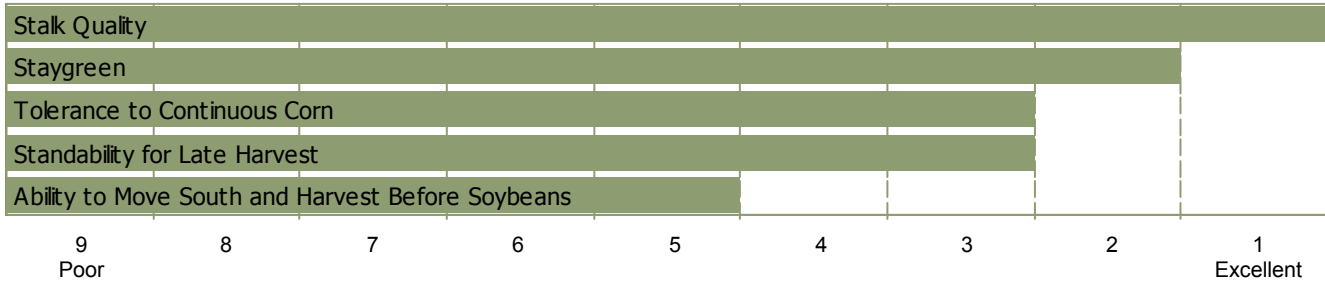
CORN

# 3114VT3

Relative Maturity: 91.00



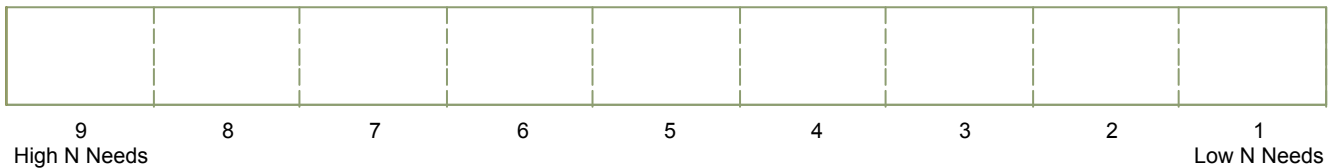
## The Right Cropping System



## The Right Traits

Technology Traits: YGRW/RR2/YGCB  
Refuge Requirements:

## The Right Plant Nutrition



## The Right Crop Protection



The data presented herein represents the most current information available, but results may vary due to environmental conditions.

© 2008 Winfield Solutions, LLC. All rights reserved. CROPLAN GENETICS is a registered trademark of Land O'Lakes, Inc.



# 3114VT3

Relative Maturity: **91.00**



### Technology Traits:

- GENSS = Genuity™ SmartStax™
- GENVT3P = Genuity™ VT Triple PRO™
- RR2 = Roundup Ready®
- YGCB = YieldGard® Corn Borer
- YGRW = YieldGard® Rootworm
- CB = Agrisure® Corn Borer
- RW = Agrisure® Rootworm
- GT = Agrisure® Glyphosate Tolerant
- HXT = HERCULEX® XTRA
- HX = HERCULEX®
- LL = LibertyLink® System
- NDS = NutriDense® Silage

### Plant Height:

T = Tall, M = Medium, S = Short

### Ear Height:

H = High, M = Medium, L = Low

### Staygreen:

Late-season health coming from strong leaf-disease resistance, enhancing hybrid standability

### Insect Resistance Management:

Insect-protected crops are genetically improved to provide in-plant protection against selected insect pests. Beneficial insects are not affected. To preserve the benefits and insect protection of these technology crops, Monsanto Technology LLC, Syngenta Crop Protection and Dow AgroSciences have developed insect resistance management (IRM) guidelines that must be incorporated by everyone purchasing and planting insect-protected crops.

### Genetic Type:

- N = Northern
- S = Southern
- E = Eastern
- E2 = Eastern 2
- W = Western
- EH = Early Health
- LH = Late Health
- HY = High Yield
- F = Flint
- T = Tropical
- UR = Unrelated

### Ear Flex:

Ability of hybrid to increase ear size with decreasing population. Flexible-ear type hybrids are made more tolerant to continuous corn by dropping plant population.

### Flower Date:

L = Late, M = Medium, E = Early

### Leaf Habit:

S-U = Semi-Upright, E = Erect



Before opening a bag of seed, be sure to read and understand the stewardship requirements, **including applicable refuge requirements for insect resistance management**, for the biotechnology traits expressed in the seed as set forth in the Monsanto Technology Agreement that you sign. By opening and using a bag of seed, you are reaffirming your obligation to comply with those stewardship requirements.

*These ratings reflect trends observed in research trials that change with variations in rainfall, temperature, crop production patterns and other factors. Ratings on new hybrids are based on limited data and may change as more data is collected.*